

INSUFION™

Leading the way to optimal insulin management



 **Unomedical**
FOR PEOPLE WHO CARE



What is insuflon™

insuflon™ is an injection port with a soft cannula which is inserted into the fatty tissue of the body at an angle of 20-45 degrees. After removing the insertion needle, the insuflon™ soft cannula stays in the body. The insulin / medication can be injected painlessly through the membrane.

Why insuflon™?

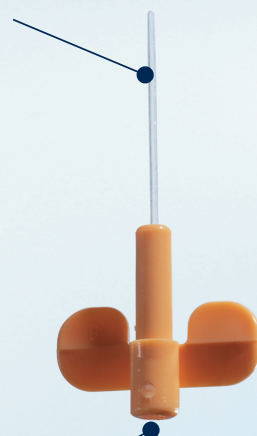
insuflon™ is an alternative to the traditional multiple injection therapy using a pen or a syringe. insuflon™ can be left in place for up to 3 days, allowing the patient to inject insulin painlessly during that period. Especially for children including infants this is a valuable therapy alternative helping to improve diabetes management.

insuflon™

- limits skin punctures
- is simple to use
- has a small and discrete design
- increases patient flexibility and convenience

Soft and flexible
18 mm cannula for
angled insertion

Injection port for
multiple subcutaneous
injections



H. Peter Chase, MD

from the Barbara Davis Center for Childhood Diabetes in Colorado states:

"We recommend insuflon™ to patients who have a fear of needles. Using insuflon™, insulin can be easily given without the pain commonly associated with frequent injections."

"insuflon™ can be helpful to people of all ages, but particularly young children benefit from its ease of use and flexibility as they are able to give their own insulin."

US points of contact

Intra Pump Infusion Systems

Email: info@intrapump.com

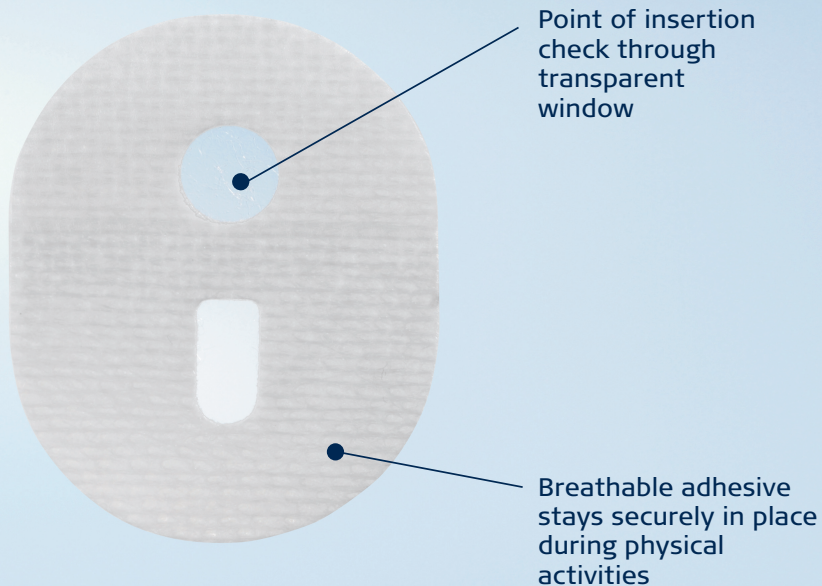
Tel.: 1-866-211-7867

Edgepark Medical Supplies

Tel.: 1-800-321-0591

Advanced Diabetes Supply

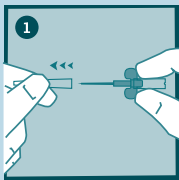
Tel.: 1-800-730-9887



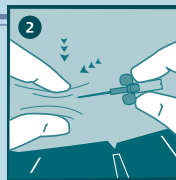
How to use insuflon™

When initially trying a new indwelling catheter, we recommend this to be done under the supervision of a healthcare professional.

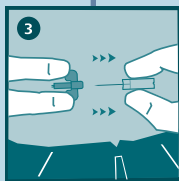
Please note: This guide only illustrates some of the steps to follow when inserting insuflon™, and it is not a substitute for reading the instructions for use which comes with the product.



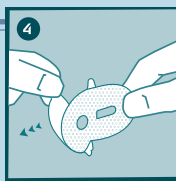
1 Remove the needle guard.



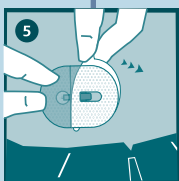
2 Insert insuflon™ on your clean insertion site by creating a skin fold and choosing an insertion angle as recommended by your healthcare professional.



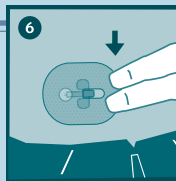
3 Remove the introducer needle.



4 Remove the front part of the adhesive backing paper.



5 Place the adhesive over the indwelling catheter making sure that the point of insertion is visual through the transparent window of the adhesive. Remove the rear part of the adhesive backing paper.



6 Massage the adhesive thoroughly onto the skin.

Note: Dead space in the cannula corresponds to approximately 0.5 unit of U100.



UNOMEDICAL a/s · DK-4320 LEJRE · DENMARK
 WWW.INFUSION-SET.COM · WWW.UNOMEDICAL.COM